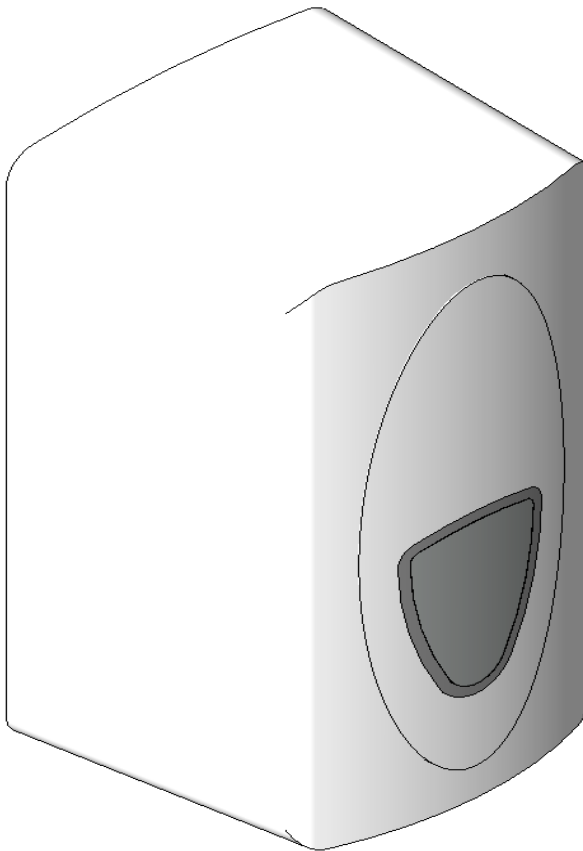


DOLPHIN SOLUTIONS LIMITED

DOLPHIN EXCEL BULK PACK TOILET TISSUE DISPENSER

BC4300



Family Types

Name: BC4300 Dolphin Excel Bulk Pack Toilet Tissue Dispenser

Parameter	Value	
Dimensions		
Width	160mm	=
Projection	149mm	=
Height	292mm	=
General		
Product Page Link	www.dolphinsolutions.co.uk/en/en/product/bulk-pack-toilet-tissue-dispenser-2	=
Product Data	Lockable Dispenser. Versatile aperture will dispense most bulk paper types. Maximum toilet	=
Identity Data		
URL	www.dolphinsolutions.co.uk	=
Type Comments		=
Tel No.	+44 (0) 1424 202224	=
Model	BC4300	=
Manufacturer	Dolphin Solutions Limited	=
Fax No.	+44 (0) 1424 205200	=
Email	info@dolphinsolutions.co.uk	=
Description	Bulk toilet tissue dispenser	=
Assembly Code	D2010900	=
Address	Southpoint, Compass Park, Bodiam, Robertsbridge, TN32 5BS	=
Keynote		=
Cost		=

Family Types

New...

Rename...

Delete

Parameters

Add...

Modify...

Remove

Lookup Tables

Manage...

OK Cancel Apply Help