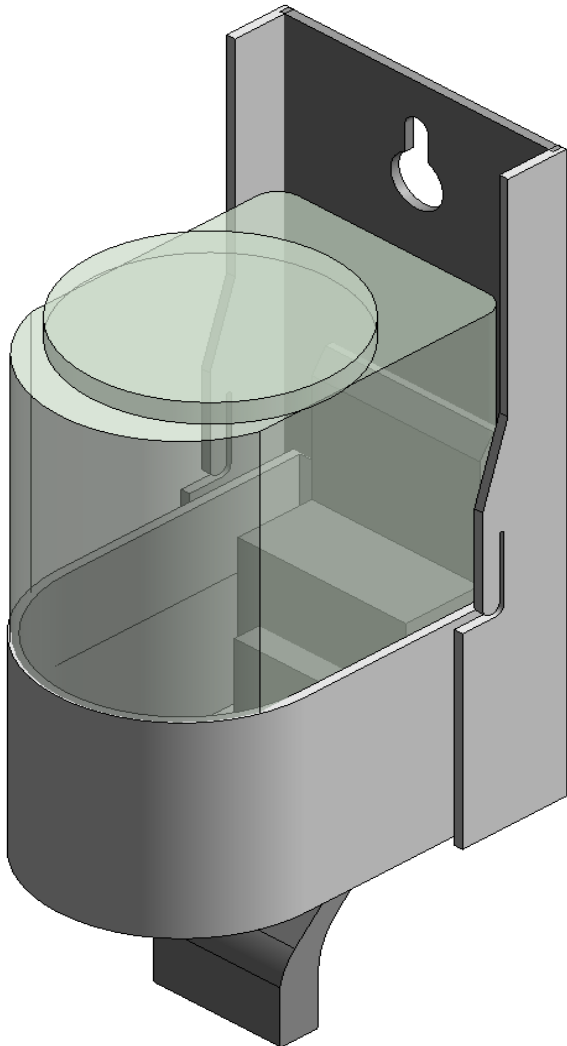


# DOLPHIN SOLUTIONS LIMITED

## DOLPHIN REFILLABLE SOAP DISPENSER

### FOR MOUNTING BEHIND HINGED MIRROR

#### DP1501



Family Types

Name: DP1501 Dolphin Refillable Soap Dispenser for Mounting Behind Hinged Mirror

Parameter	Value
<b>Dimensions</b>	
Width	67mm
Projection	87.5mm
Height	193mm
<b>General</b>	
Product Page Link	<a href="https://www.dolphinsolutions.co.uk/product/refillable-soap-dispenser-for-mounting-behind-hinged-mirror/">https://www.dolphinsolutions.co.uk/product/refillable-soap-dispenser-for-mounting-behind-hinged-mirror/</a>
Product Data	Superior quality and timeless design for prestigious washrooms. Metal parts in robust, easy-to-clean stainless steel.
Capacity Soap	200ml soap tank = approx. 250 shots of soap.
<b>Identity Data</b>	
URL	<a href="http://www.dolphinsolutions.co.uk">www.dolphinsolutions.co.uk</a>
Tel No.	+44 (0) 1424 202 224
Model	DP1501
Manufacturer	Dolphin Solutions Ltd.
Fax No.	+44 (0) 1424 205 200
Email	<a href="mailto:info@dolphinsolutions.co.uk">info@dolphinsolutions.co.uk</a>
Description	Refillable soap dispenser for mounting behind hinged mirror
Assembly Code	D2010900
Address	Southpoint, Compass Park, Junction Road, Bodiam, TN32 5BS
Keynote	
Type Comments	
Cost	

Family Types

New...

Rename...

Delete

Parameters

Add...

Modify...

Remove

Lookup Tables

Manage...

OK Cancel Apply Help