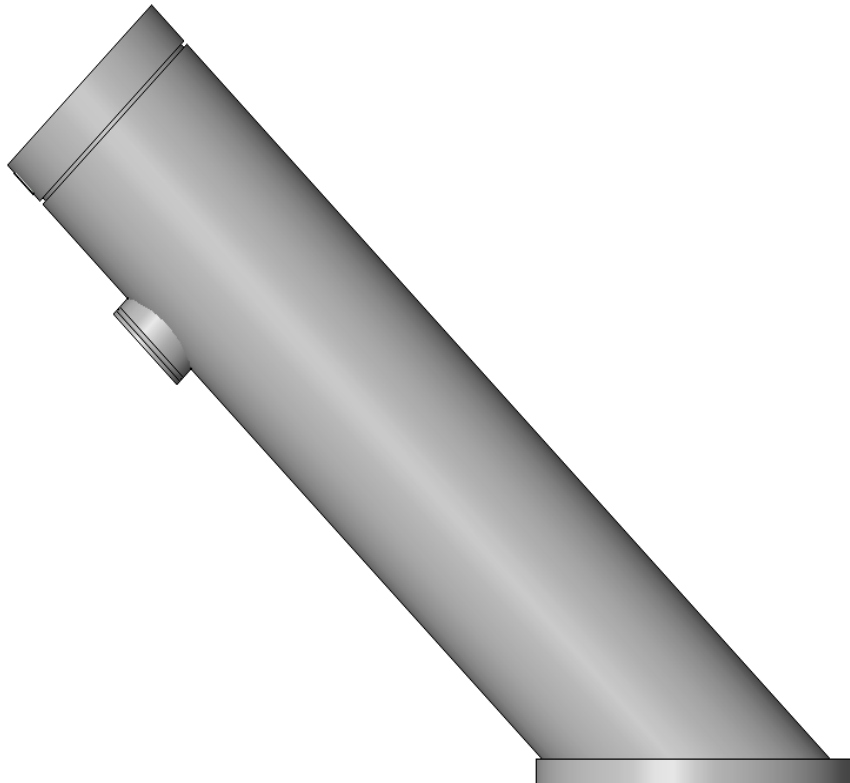


# DOLPHIN SOLUTIONS LIMITED

## DOLPHIN ELECTRONIC INFRARED TAP

### DB840 - DB845



Family Types

Name: DB840-DB845 Dolphin Electronic Infrared Tap

Parameter	Value	Formula
<b>Electrical</b>		
Power Source	Plug-in 9 Volt transformer or 9 Volt Battery (with low battery warning)	=
<b>Dimensions</b>		
Width	45mm DIA.	=
Projection	122mm	=
Height	157mm	=
Counter Thickness	Minimum 2mm / Maximum 27mm	=
Counter Hole	28-34mm DIA.	=
<b>General</b>		
Product Page Link	<a href="http://www.dolphinsolutions.co.uk/product/dolphin-electronic-infrared-tap">www.dolphinsolutions.co.uk/product/dolphin-electronic-infrared-tap</a>	=
Product Data	Touch Free Tap – for ultimate hygiene – prevents cross contamination. Poli	=
Pressure	0.5 - 8.0 bar (7 - 116PSI)	=
Power Connections	Tap: female / Power source: male	=
Maximum water temperature	70° C	=
<b>Other</b>		
WRAS approved	<input checked="" type="checkbox"/>	=
SKA Rating Compliant	<input checked="" type="checkbox"/>	=
<b>Identity Data</b>		
URL	<a href="http://www.dolphinsolutions.co.uk">www.dolphinsolutions.co.uk</a>	=
Type Comments		=
Tel No.	+44 (0) 1424 202224	=
Model	DB840 - DB845	=
Manufacturer	Dolphin Solutions Limited	=
Fax No.	+44 (0) 1424 205200	=
Email	<a href="mailto:info@dolphinsolutions.co.uk">info@dolphinsolutions.co.uk</a>	=
Description	Electronic infrared tap	=
Assembly Code	D2010900	=
Address	Southpoint, Compass Park, Bodiam, Robertsbridge, TN32 5BS	=
Keynote		=
Cost		=

Family Types: New..., Rename..., Delete

Parameters: Add..., Modify..., Remove

Lookup Tables: Manage...

OK Cancel Apply Help